

Individual Value; Valuing Individuals

Medication & Management Procedures and Policy

This Policy Links With: Health and safety Equality	
Recommended:	Y
Statutory:	
Date Reviewed:	October 2023
Date of Next Review:	October 2025
Committee Responsible for Review:	QEHS
Date agreed	21.10.23

This document is produced in conjunction with the Leicestershire Partnership Trust. We would like to acknowledge input from professional bodies and services with Leicestershire County, City and Rutland. This policy document is required to be made site specific for your establishment and signed off by the Senior Management Team as current and valid.

An annual review is required.

Please note additional information is available in the appendices listed on the school's website www.leicestershiretradedservices.org.uk relating to Individual Care Plans and specific medical needs/conditions.

Section 100 of the Children and Families Act 2014 places a duty on governing bodies of maintained schools, proprietors of academies and management committees of PRUs to plan for supporting pupils at their school with medical conditions

This document has been reviewed in line with current up to date legislation and with the support of the Leicestershire Partnership groups/healthcare professionals.

Asfordby Hill Primary School will:

- be responsible for developing and regularly reviewing, its own medication policy and related policies and procedures, copies of which should be available to school staff and parents/carers.
- Administer prescribed and non-prescribed medication. Such medications could be on a temporary, short term or one-off basis or for a longer term or continual period for pupils with ongoing support needs.
- be responsible for updating individual health care plans for pupils who have longer term support needs. This health care plan will be developed, recorded, and reviewed at least annually.
- ensure that emergency procedures are in place and shared with all staff
- ensure that all staff are aware of what practice is not acceptable
- ensure that a complaints procedure is in place regarding the support provided to a pupil with a medical condition
- ensure that written records are kept of all medicines administered to pupils

Responsibilities

Governing Bodies

- The Trustees and staff of Asfordby Hill Primary School wish to ensure that pupils with medication needs receive appropriate care and support while at school so that they have full access to education.
- They should ensure that sufficient staff have received suitable training and are competent before they take on responsibility to support children with medical conditions. The minimum qualification being a sufficient first aid qualification and any training identified by the health care professional.
- Ensure arrangements are in place to support pupils with medical conditions in school, including making sure that this policy is implemented.
- should ensure that pupils with medical conditions are supported to enable the fullest participation possible in all aspects of school life

Head Teacher

- The head teacher accepts responsibility for members of the school staff administering or supervising pupils taking prescribed or non-prescribed medication during the school day
- should ensure that all relevant staff, including external providers, i.e. Before/After School and activity clubs are aware of pupil's conditions.
- should ensure that sufficient professionally trained numbers of staff are available to implement the policy and deliver against all individual healthcare plans, including in contingency and emergency situations
- staff administering medicine should be provided with a clear health plan and support as required (Template a)
- should contact the school nursing service in the case of any child who has a medical condition that may require support at school, but who has not yet been brought to the attention of the school nurse ([School Nurse](#))
- should ensure there are adequate arrangements, including clear procedures, for safe receipt, storage, administration and disposal of medication and adequate access, to and privacy for, the use of medication
- Controlled drugs – the controlled drug administration register is to be kept for two years from the date of the last entry in the register. If misuse of a controlled drug is suspected, all records should be checked by Senior Management and the Head Teacher, and reported to the Police/Local Intelligence Network ([LIN](#)). Guidance on this should be sought from healthcare professionals.

School Staff

- When medication is administered by staff, it shall be by those members of staff that have volunteered and been trained to do so, unless medically qualified staff are employed on site. It will not automatically be assumed that a qualified first aider will fulfil this role.
- Staff will not give prescription or non-prescription medication unless there is specific written consent from a parent or carer. (Template b)
- Members of staff administering medicine will check the child's Administration of Medication Permission and Record form against the medication, to ensure that the dose and timing are correct.
- Staff will then administer the medicine as required, and record this on the form. For long-term medication, an Administration of Medication Continuation Sheet will be used as necessary
- If staff have any concerns related to the administration of a medication, staff should not administer the medication but check with the parents/carers and/ or a healthcare professional.
- Each individual pupil's spoon/syringe/vessel should be cleaned and kept with their own medication.

School Nursing System and Healthcare Professionals ((including GPs, paediatricians, nurse specialists/ community paediatric nurses))

- should notify the school nurse and work jointly when a pupil has been identified as having a medical condition that will require support at school
- may provide advice on developing healthcare plans
- specialist local health teams may be able to provide support in schools for pupils with particular conditions (e.g., asthmas, diabetes, epilepsy)
- should ensure any prescribed medications, including dosages, are appropriately monitored, and reviewed
- should be aware of their responsibilities for notifying the school when a pupil has been identified as having a medical condition which will require support in school
- can support staff on implementing a pupil's individual healthcare plan and provide advice and liaison, for example, on training
- can liaise with lead clinicians locally on appropriate support for the pupil and associated staff training needs

Pupils and Parents

- Where possible, pupils will be encouraged to self-administer their own medication
- Parents/carers have the prime responsibility for their child's health and should provide schools and settings with detailed information about their child's medical condition. This responsibility should be communicated via school/setting parent/carer meetings and/or prospectus/school website information
- On the child's admission to the school the parent/carer should be asked to complete an admission form giving full details of medical conditions, any regular/emergency medication required, name of GP, emergency contact numbers, details of hospital Consultants, allergies, special dietary requirements, and any other relevant information. This information should be renewed annually
- An Individual Healthcare Plan (Template a) will be used to record the support of an individual pupil for their medical condition. The IHCP is developed with the pupil (where appropriate), parent/carer, designed named member of school staff, specialist nurse (where appropriate) and relevant healthcare services
- A measuring spoon/syringe/vessel must be provided by the parent/carer, and the dose of medicine is measured using this. Wherever possible, the spoon/syringe/vessel should be handed to the pupil for them to administer the dose themselves

Refusal

- If a child/young person refuses to take medicine, staff will not force them to do so. Other examples include spat out or mishandling of medication. Staff will record the incident on the administration sheet. (Template d) and on AssessNET where applicable

- Asfordby Hill Primary School will take prompt action by informing the parent/carer and healthcare professional as soon as possible, as outlined in their IHCP.

Medication

Forms for medication can be found in 'Templates, at the end of this policy)

- No child under 16 should be given prescription or non-prescription medicines without a parent or guardian's written consent, except in exceptional circumstances where the medicine has been prescribed without the knowledge of the parents. In such cases, every effort should be made to encourage the child or young person to involve their parents, while respecting his or her right to confidentiality
- Medication must be in its original packaging, labelled with the pupil's name, dose, and frequency of administration, storage requirements and expiry date
- Non-prescription medicines such as hay fever treatment will be treated in the same way as prescription medicines in that they should be in a clearly labelled original container with a signed consent form detailing the pupil's name, dose, and frequency of administration. Staff may take a note of the quantity provided to them, liquids may be marked with a line
- The school should not hold stock of over-the-counter medications
- Aspirin **MUST NOT** be given to children under 16 years of age unless prescribed
- Parents/carers should be asked to collect all medications/equipment at the end of the school term, and to provide new and in date medication at the start of each term

Controlled Drugs

Some pupils may require routine, or emergency prescribed controlled drugs administering whilst at school – Asfordby Hill Primary School will follow additional safety controls for storage, administration, and disposal, under the Misuse of Drugs Regulations 2001, to ensure that all legal requirements and best practice are adhered to.

- A child who has been prescribed a controlled drug may legally have it in their possession if they are competent to do so but passing it to another child for use is an offence.
- Monitoring arrangements may be necessary. The school should have addressed misuse of drugs' and have procedures in place. This may be covered in the school's health and safety policy. For example, where pupils pass their medication to other pupils.
- Storage: the medication should be double locked, i.e., in an appropriate storage container, in a locked room. The medication may need to be kept refrigerated once opened, and this should be made clear on the IHCP. Named staff only should be allowed access to the medication. A plan for obtaining the medication for a medical emergency, or school evacuation, should be put into place.
- Administration: two members of staff should be present when the drug is to be administered, to double check the dose is correct. One person will administer the dose, and the second person will witness its administration

- A controlled drug can only be admitted on the school premises if it is recorded in the pupil's individual healthcare plan and administered during school hours
- Additional training should be provided to the identified staff
- Advice should be sought from healthcare professionals, or the School Nurse, together with consultation with the parent/carers
- Record keeping: A separate Controlled Drug register should be kept, to record each dose that is administered, and should be signed by the two members of staff who administer the medication
- Asfordby Hill Primary School will seek advice from healthcare professionals regarding unused controlled drugs as they should be destroyed under specific controlled conditions. This should be referred to on the IHCP, and advice taken from healthcare professionals

Storage of medication

- Medication should be kept in a known, safe, and secure location.
- A designated refrigerator in an appropriate location i.e., medical room (lockable is preferred) will be available for cold storage. This will be strictly in accordance with product instructions; paying particular note to temperature and in the original container in which dispensed. Temperature checks carried out daily and recorded (Appendix B, in this document)
- Prescribed emergency medication, such as epi-pens or asthma inhalers, should remain with the pupil, or immediately accessible at all times; including P.E and off-site educational visits, before and after school clubs
- Parents/carers are responsible for ensuring that the education setting has an adequate amount of medication for their child
- Asfordby Hill Primary School will only accept medication that is in date, labelled and in its original container including prescribing instructions for administration.
- **Inhalers** will be kept in individual classrooms in a grab bag, unless there is a specific reason why this is not appropriate, which must be documented in the IHCP

Record Keeping

- Consent forms must be signed before any medication is given. The educational setting is responsible for storing copies of signed consent forms. Consent forms should follow the template provided by the D of E (See Templates)
- The pupil's name, age, and class, Contact details of the parent/carers and GP
- Individual care plans must be developed and reviewed for all pupils with needs that may require ongoing medication or support. Such care plans should be developed with parents/carers, the educational setting and other professional input as appropriate. (See Appendix A, in this document)
- Records must be kept for each child detailing each medication administered. There must also be a daily summary sheet detailing all pupils that have received medication that day under the supervision of the school.

Emergency Medication

- In the event of a medical emergency, all relevant procedures should be activated and 999 dialled as appropriate
- Asfordby Hill Primary School has chosen to hold an emergency inhaler for use by pupils who have been diagnosed with **asthma** and prescribed a reliever inhaler, OR who have been prescribed a reliever inhaler.
- Asfordby Hill Primary School has chosen to hold an emergency auto-injector for use by pupils who have been diagnosed with allergies and/or prescribed an adrenaline auto injector.
- Written parental consent for emergency medication use will be obtained using the consent form (see templates) and a copy of this is kept with the emergency medication to establish which pupils have this in place and will form part of the child's IHCP.
- If there is an emergency situation whereby consent has not been received, either for a pupil with **diagnosed asthma**, or for a pupil with no previous history or knowledge of asthma and symptoms suggest an asthma attack is occurring, the emergency services will be called. If advised to do so by the emergency services, the emergency inhaler will be used even where consent has not been received and full details of the advice given, and dosage administered will be recorded.
- Pupils with a known allergy, for example, to wasp stings, food allergies and medications, should have an Individual Health Care Plan (IHCP), with an emergency action plan, completed by their healthcare professional.
- If a pupil is going into **anaphylactic shock**, the emergency services will be called immediately
- If there is an emergency situation where a pupil has no previous history or knowledge of having an allergy, but symptoms suggest **anaphylactic shock** is occurring, the emergency services will be called.
- If advised to do so by the emergency services, another pupil's autoinjector will be used even where consent has not been received and full details of the advice given, and dosage administered will be recorded. Asfordby Hill Primary School should inform the emergency services that an emergency adrenaline auto-injector is in the school

Return of Medication and or disposal, including Sharps Bins and Medication Errors

- Sharp items must be disposed of safely using a sharps bin. These are available on prescription for pupils who require regular medication of this type, e.g., Insulin. These should be returned to the pupil / parent as per 'sharps guidelines' (<https://www.hse.gov.uk/pubns/hsis7.pdf>). Schools can purchase a sharps bin for generic use, e.g., for the disposal of sharps that have been used in an emergency. It is then the school's responsibility to arrange for its safe disposal (Hazardous Waste Regulations 2005).
- Parents/carers are responsible for collecting remaining medication at the end of each day or term (as appropriate) and for re-stocking medication at the start of each term. Parents will be sent a letter requesting collection. After two attempts the medication should be taken to

a local pharmacist, for safe disposal. It is advised to keep a record of medication that is taken, and a signature is obtained from the receiving pharmacist. (See example letter Appendix C, in this document)

Complaints Procedure

Asfordby Hill Primary School will ensure that any complaints concerning the support provided to pupils with medical conditions will be investigated appropriately.

- Should parents or pupils be dissatisfied with the support provided they should discuss their concerns directly with the school. If for whatever reason this does not resolve the issue, they may make a formal complaint via the school's complaints procedure
- Making a formal complaint to the Department for Education should only occur if it comes within scope of section 496/497 of the Education Act 1996 and after other attempts at resolution have been exhausted. In the case of academies, it will be relevant to consider whether Asfordby Hill Primary School has breached the terms of its Funding Agreement (the contractual relationship between the academy and the Department for Education) or failed to comply with any other legal obligation placed on it. Ultimately, parents (and pupils) will be able to take independent legal advice and bring formal proceedings if they consider they have legitimate grounds to do so.

Transport, School Trips, Visits and Sporting Events

- Medication required during a trip should be carried by the child if this is normal practice. If not, then a trained member of staff or the parent/carer should be present, either of whom can carry and administer the medication as necessary. Please refer back to your internal EVC policy
- Medication provided by the parent must be accompanied with written directions for its use. All responsible persons should have access to this information prior to the visit to enable sound judgements should a medical emergency arise. Team leaders should be comfortable with the administration of parental instructions when agreeing to accept young people as participants on a visit.
- For pupils with known medical conditions, staff will contact the parent/carer in advance of the trip. This will ensure that they are fully briefed to ensure that there are adequate quantities of medication available, that the pupil's condition is stable, and which emergency details are required should the pupil need to have additional support. This is documented for the Group Leader
- Drivers and escorts should know what to do in the case of a medical emergency. They should not generally administer medicines but where it is agreed that a driver or escort will administer medicines (i.e., in an emergency) they must receive training and support and fully understand what procedures and protocols to follow
- Appropriate trained escorts if they consider them necessary to be available for the journey. This may include drivers having basic first aid training as part of their role.
- This should be agreed and documented with the school, the parent, and the transport/driver

Documents and support links can be found here:

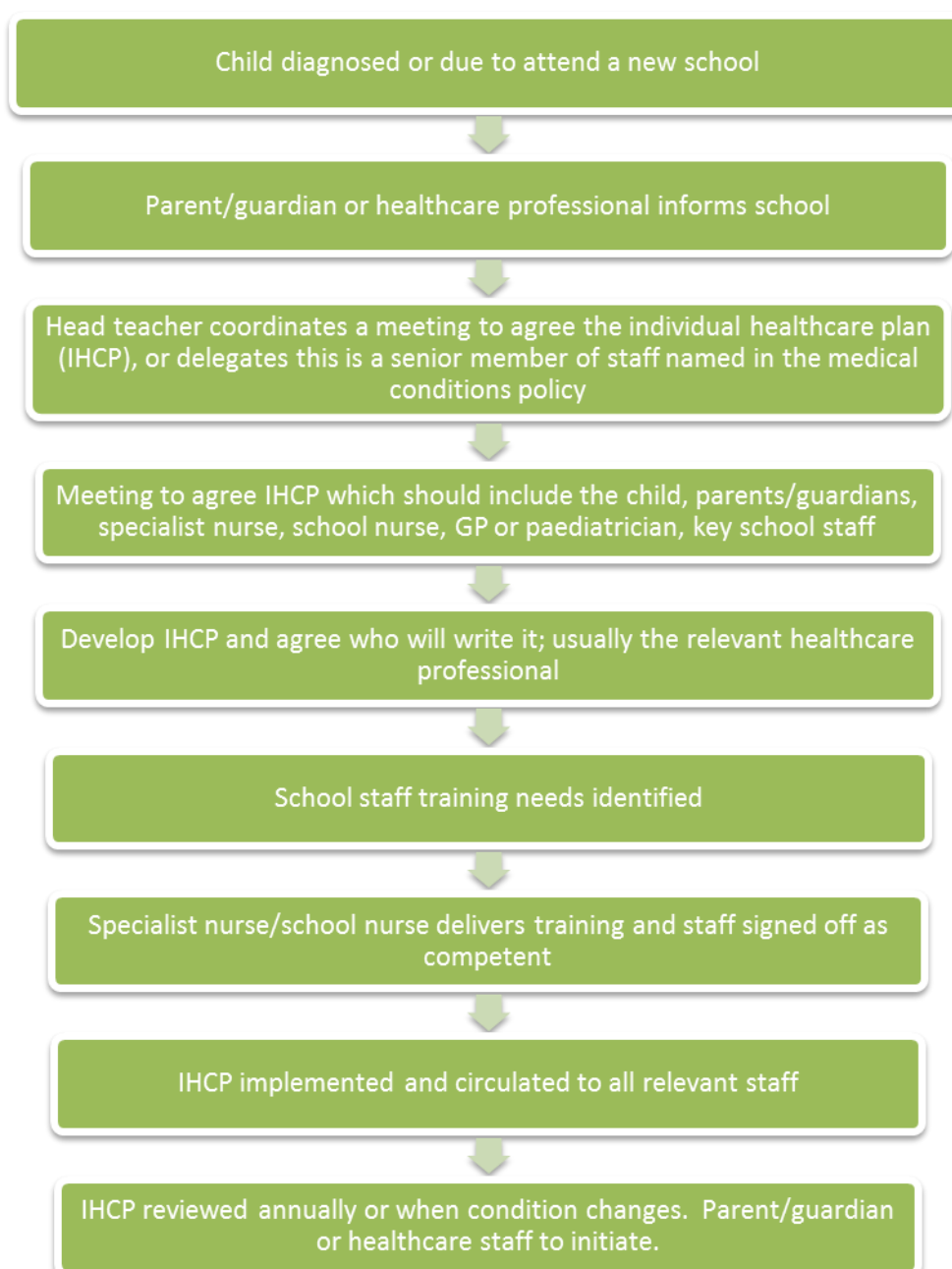
Department of Education Guidance	Supporting Pupils with Medical Conditions
<p>D of E Templates include:</p> <ul style="list-style-type: none"> - Template A: individual healthcare plan (where did our template A and B come from) - Template B: parental agreement for setting to administer medicine - Template C: record of medicine administered to an individual child - Template D: record of medicine administered to all children - Template E: staff training record – administration of medicines - Template F: contacting emergency services - Template G: model letter inviting parents to contribute to individual healthcare plan development 	Templates: Supporting pupil with medical conditions
Government Commonly encountered controlled drugs	Commonly encountered controlled drugs
Government Controlled drugs	Policy drug misuse
Asthma General Information	www.asthma.org.uk
Epilepsy	www.epilepsy.org.uk
Haemophilia	www.haemophilia.org.uk
Anaphylaxis	www.anaphylaxis.org.uk See separate LCC Allergy and Anaphylaxis Guidance Document: 'Emergency Action Plan' forms for Epipen/Jext Pens. If administered please report this to: Bridge Park Plaza, Fax: 0116 258 6694 and email to childrensallergy@uhl-tr.nhs.uk
Thalassaemia	https://ukts.org/
Sickle Cell Disease	www.sicklecellsociety.org
Cystic Fibrosis	www.cftrust.org.uk
Diabetes	www.diabetes.org.uk Paediatric Diabetes Specialist Nurse: 0116 258 6786 Consultant Paediatrician: 0116 258 7737 Diabetes Care line services: 0345 123 2399

Insurance Section LCC	James Colford, Tel: 0116 305 6516 (for insurance concerns)
Health, Safety & Wellbeing, LCC, County Hall,	Tel: 0116 305 5515 Email: healthandsafety@leics.gov.uk
Public Health	PublicHealth@leics.gov.uk
Diana Children's Community Service	Bridge Park Plaza, Thurmaston, Leicester LE4 8PQ Telephone: 0116 2955080
Public Health (school) Nurses	https://www.healthforkids.co.uk/leicestershire/school-nurses/

Appendix A: Procedure for the development of an Individual Health Care Plan (IHCP)

An IHCP is a written, recorded plan on the specific information and requirements of an individual pupil and ensure that the pupil's needs will be met in the educational setting. Plans should be agreed by the head teacher and parents/guardians, be formally recorded, and reviewed at regular intervals.

The procedure for development of an IHCP is given below:



Appendix B - Refrigeration Temperature Check List

Fridge Location: (secure location)

Month:

Year: 202.....

[illegible]

Please record when the fridge was cleaned / fridge/freezer defrosted:202.....

Review: Has the fridge temperature been checked every day? ☐ Yes ☐ No

Has any necessary action been taken? ☐ Yes ☐ No

If YES, what was the action?

If no, what are the reasons?

Reviewed by:

Date:

If the fridge temperature is outside of the stated range (+2°C and +8°C) then assess the integrity of the stock in the fridge seeking manufacturers advice, where appropriate. If stock is likely to have been compromised the child's parents should be informed.

Appendix C: Helping us to manage your child's medications

Letter to parents (Example)

Dated:

Dear Parent / Carer / Guardian,

We are still in possession of your child's medication; which has now either; exceeded its expiry date or are no longer required. Could we therefore request that you collect the medication, within the next week.

If the medication is classed as a 'Controlled Drug'; you will be required to return any unwanted quantities to the pharmacist that originally dispensed it.

Please note that you will be requested to 'sign' for the medications, upon collection from the school.

We thank you for your co-operation, in this matter,

With kind regards,

Head Teacher / Health Care Professional

Template Contents

Introduction	14
Template A: individual healthcare plan	15
Template B: parental agreement for setting to administer medicine	16
Template C: record of medicine administered to an individual child	17
Template D: record of medicine administered to all children	Error! Bookmark not defined.
Template E: staff training record – administration of medicines	Error! Bookmark not defined.
Template F: contacting emergency services	Error! Bookmark not defined.
Template G: model letter inviting parents to contribute to individual healthcare plan development	Error! Bookmark not defined.

Introduction

In response to requests from stakeholders during discussions about the development of the statutory guidance for supporting pupils with medical conditions, we have prepared the following templates. They are provided as an aid to schools and their use is entirely voluntary. Schools are free to adapt them as they wish to meet local needs, to design their own templates or to use templates from another source.

Template A: individual healthcare plan

Name of school/setting	
Child's name	
Group/class/form	
Date of birth	
Child's address	
Medical diagnosis or condition	
Date	
Review date	

Family Contact Information

Name	
Phone no. (work)	
(home)	
(mobile)	
Name	
Relationship to child	
Phone no. (work)	
(home)	
(mobile)	

Clinic/Hospital Contact

Name	
Phone no.	

G.P.

Name	
Phone no.	

Who is responsible for providing support in school	
--	--

Describe medical needs and give details of child's symptoms, triggers, signs, treatments, facilities, equipment or devices, environmental issues etc

Name of medication, dose, method of administration, when to be taken, side effects, contra-indications, administered by/self-administered with/without supervision

Daily care requirements

Specific support for the pupil's educational, social and emotional needs

Arrangements for school visits/trips etc

Other information

Describe what constitutes an emergency, and the action to take if this occurs

Who is responsible in an emergency (*state if different for off-site activities*)

Plan developed with

Staff training needed/undertaken – who, what, when

Form copied to

Template B: parental agreement for setting to administer medicine

The school/setting will not give your child medicine unless you complete and sign this form, and the school or setting has a policy that the staff can administer medicine.

Date for review to be initiated by	
Name of school/setting	
Name of child	
Date of birth	
Group/class/form	
Medical condition or illness	

Medicine

Name/type of medicine (as described on the container)	
Expiry date	
Dosage and method	
Timing	
Special precautions/other instructions	
Are there any side effects that the school/setting needs to know about?	
Self-administration – y/n	
Procedures to take in an emergency	

NB: Medicines must be in the original container as dispensed by the pharmacy

Contact Details

Name	
Daytime telephone no.	
Relationship to child	
Address	
I understand that I must deliver the medicine personally to	[agreed member of staff]

The above information is, to the best of my knowledge, accurate at the time of writing and I give consent to school/setting staff administering medicine in accordance with the school/setting policy. I will inform the school/setting immediately, in writing, if there is any change in dosage or frequency of the medication or if the medicine is stopped.

Signature(s) _____

Date _____

Template C: record of medicine administered to an individual child

Name of school/setting	
Name of child	

Date medicine provided by parent

Group/class/form

Quantity received

Name and strength of medicine

Expiry date

Quantity returned

Dose and frequency of medicine

Staff signature

Signature of parent

Date

Time given

Dose given

Name of member of staff

Staff initials

Date

Time given

Dose given

Name of member of staff

Staff initials
