



Monthly Newsletter

Asfordby Hill Primary School

November 2024: Issue 14



Dear Parents / Carers,

I hope this newsletter finds you well. In this edition, we share some of the stimulating enrichment activities that have happened across the school in November. Firstly, we were excited to host a celebration of Diwali through a series of engaging dance workshops for all the classes which we scheduled for the week of Diwali. These sessions allowed the children to explore the cultural significance of the festival while learning traditional dance forms. It was an enjoyable and educational experience for all. Thank you to all the Year 2 parents who stayed behind after school to watch the performance.

Additionally, students from Willow and Holly classes took part in Creative Library Services workshops linked to their history learning. These sessions are designed to foster a love for history and art. The Year 1 children told me how much they had learnt about homes in the past and that washing clothes used to be such hard work before the invention of electricity, whilst the Year 2s created magnificent pieces of art themed around The Great Fire of London using mono-printing techniques.

Sycamore's trip to the National Space Centre took place on Monday 4th November. This excursion offered our Year 5s a unique opportunity to explore the wonders of space and develop a deeper understanding of science. A huge thank you to FOAH for supporting with all our trips again this year by paying for the buses.

As always, here at AHS, we held Remembrance Day activities across the school. The engagement in the school-wide activities, that honours and commemorates those who have served in the Armed Forces, included one of our classes laying a wreath down in the village. The children's understanding of 'Remembrance' included assemblies, creative projects and a whole school minutes silence. Thank you again for all your support when buying poppies for the British Legion. The Year 6 House Captains will let us know how much we raised when they hear back from the charity.



Have you seen our NEW school website? It's been designed to be easily accessible as well as easier to navigate. Please bear with us as we get the site all up to date.

A big thank you must go to our alumni, Mr Tierney, for volunteering his time to film us all in action. The final cut of the virtual tour will be on the website soon!

Lastly, it has come to our attention from the most recent 'Kids Are Reading' report from the National Literacy Trust that there is a concerning 26% drop in children reading daily for pleasure. With enjoyment at its lowest, it's vital to encourage more reading at home. Check out our section below for fun ideas to spark that love for books!

Once again, thank you for your continued support and cooperation. We are looking forward to December's events: Shrek Junior production, Chestnut's nativity, our Santa Dash, Chestnut and Willow decorations afternoon, and of course AHS's famous Christmas dinner, to name a few. It's going to be a busy month ahead and we can't wait to see you all in school!

Mrs Millward

WHAT'S IN THIS MONTH'S ISSUE:

- Key Dates
- PE timetable/After school timetable
- What have we been upto?
- School News
- Reading For Pleasure
- Team Points
- Wow Awards
- Friends of Asfordby Hill
- Mental Health Information
- Community information

Key dates for your diary

Other Dates:

Wednesday 4th December: SEND clinic

Wednesday 4th December: Chestnut's Nativity 1:30pm

6th -10th December: Christmas Tress Festival at St Mary's Church Melton- see our SHREK tree!

Friday 6th December: Non-uniform day for a tombola prize/Santa Dash

Friday 6th December: Chestnut and Willow classes Christmas Decoration afternoon with parents 1:45pm

Saturday 7th December: Christmas Fair 11am-1pm

Tuesday 10th December: Matinee performance of Shrek Junior 1:30pm

Wednesday 11th December: Evening performance of Shrek Junior 6pm (children to be dropped off at 5:30pm)

Thursday 12th December: Evening performance of Shrek Junior 6pm (children to be dropped off at 5:30pm)

Friday 13th December: Y1 to Y6 Panto Trip (see letter sent out)

Wednesday 18th December: Christmas Dinner at school

Week beginning Monday 12th May 2025: Year 6 SATS week

Wednesday 11th June – Friday 13th June 2025: Year 6 residential to Beaumanor Hall

PE Timetable

Please remember to wear PE kit on your PE days. PE days for each class are below:

	Mon	Tues	Weds	Thurs	Friday
am1					EYFS
am 2		Rowan			Sycamore
lunch	Y	Y		Y	Y
	Holly	Sycamore	Beech	Willow	Willow
	Rowan	Beech	Oak	Oak	Holly

What have we been up to?

Rowan class visited the Memorial Garden in Asfordby for Remembrance Day



Year 5 and 6 Footballers were amazing at the recent tournament



Wow! Thank you CLS For providing an inspiring printing workshop for Holly Class



Willow class tried using the equipment used for washing clothes at the time the school was built!

Year 5s and 6s had an inspiring talk about money matters from Money Sense



The whole school had a Rail Safety talk which were very informative about keeping us safe near the railways.



Chestnuts had a visit from PC Tranter, who came to talk to us about his job as a police officer.



Well done to our representatives at the Mallory Park Cross Country event.



Back in September/October, our KS2 children took part workshops around 'What makes a good friend?' where children thought about the attributes a good friend needs and wrote recipes for friendship soup.

Leicestershire local authorities liaisons officers have worked together with Asfordby Hill Primary School, along with another school in Leicestershire, to create a Friendship Soup collaborative art exhibit for the Expression of Freedom Exhibition 2024.

This exhibition is an exciting project which explores the context of relationships and abuse in relationships with a range of people from across Leicestershire including young people and survivors, using art to reflect, heal, empower, and give a creative voice.

The Expression of Freedom Exhibition will be in Highcross Shopping Centre from 25th November – 10th December 2024. You will find the exhibition on the first floor between Argento and Vision Express (opposite Millie's Cookies).

The officers have said a huge thank you for allowing them to come and work with our children, they were amazing and produced some thoughtful and reflective responses.

They hope you and your families manage to come and see the exhibition. Knowing what makes a good friend from a young age is important so that children can identify early in their lives the difference between positive and negative friendships in order to help keep themselves safe throughout their lives.

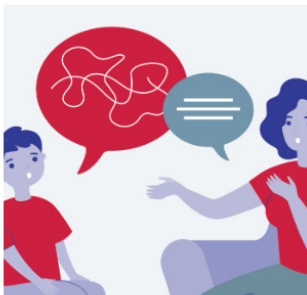


Welcome back Mrs Close (Miss Warner) who returns after her maternity leave. Please give her a wave and hello when you see her around school.

Reading For Pleasure

Reading for pleasure is a delightful gateway to endless adventures and possibilities. When children discover the joy of reading, it can significantly boost their confidence, enabling them to express themselves more freely. Enjoyment in stories can spark their imagination, whisking them away to fantastical worlds and inspiring creativity. Additionally, reading exposes young minds to different cultures and ideas, expanding their horizons in ways they might not have imagined. Whether it's books, comics, or even audiobooks, let's encourage reading in all its forms. Fostering a love of reading can truly transform a child's life!

Reading for Pleasure



The correlation in progress between a child who reads for *up to* 30 minutes a day compared to another who never reads is **one year**.

Children from literacy-rich homes hear a cumulative **1.4 million more words** during storybook reading than children who are never read to.

The language gap gets **wider** as they progress through school.

Taking 10 minutes to read each day is a great habit to develop and [it's never too early to start](#).

Here are some things you can do to help make reading fun:

Choose a time to read

Find a moment in your day that works best for you. This could be over breakfast, on the bus or in the evening.

Let your child choose

Why not try a magazine, picture book, comic, or non-fiction book? Following your child's interests will help them get excited about reading.

Chat about what you are reading

You might want to talk about the characters, facts, plots, or pictures you find on the page.

Read and repeat

Read the same thing again and again. Children learn so much from repeated reading. They'll learn to anticipate what's coming next which builds their reading confidence.

Be a reading role model

Escape into a book or magazine and see where it takes you. Children who see adults reading at home are more likely to enjoy it themselves.

The most important thing?

Do what you can! If reading every day with your child isn't possible right now, don't worry. You can gradually build up to a daily habit.



Open this link for more support and information about developing a love of reading.

[Book lists for children and young people | Words for Life](#)

Team Points



AIR



EARTH



FIRE



WATER

This month's team points results:

Week ending	AIR	EARTH	FIRE	WATER
Friday 1 st November	121	125	140	135
Friday 8 th November	156	166	140	143
Friday 15 th November	221	210	220	213
Friday 22 nd November	159	160	154	161

Congratulations to our weekly winning teams. Each week's team winners have had an extra 10 minutes of playtime on a Wednesday- enjoy!

Wow Awards

The children have worked exceptionally hard on using their rainbow skills. It has been a delight to see how many children are using these skills throughout the curriculum but also around school. On Fridays, two children from each class are awarded a WOW certificate in our Celebration Assembly and a gold star badge to wear in class the following week.

Congratulations to you all- you deserve a WOW!





Friends of Asfordby Hill Primary School (PTA)

Please come and support the Christmas Fair on Saturday 7th December 11-1pm. Santa will be joining us and looking forward to hearing what's on your Christmas list. This year we have an amazing Raffle with some great prizes such as an Escape Room voucher worth £150, Regal Cinema Sofa Voucher, The Grange Garden Centre Restaurant Afternoon Tea for Two, Bistro Live Table for 10 including a 3-course meal and Buckets of Wine! Tickets for the raffle will be on sale during the fair.

On Friday 6th December there will be a Non- Uniform Day for all the pupils. In return for wearing their own clothes, please send your child to school with Tombola Prizes in Years 2,3,4,5 and 6. For children in EYFS and Year 1 please send them in with donations of sweets and chocolates for a special children's tombola.

We are also looking for donations from any home bakers willing to donate homemade cakes,. If ingredients could be attached to the cakes for dietary requirements that would be great- thank you.

We would prefer cash to be used at our Christmas Fair to make life a lot easier for all of our volunteers on the day.

Finally, thank you to all volunteers that have offered to help on the day - without you all we wouldn't be able to do these things. If you would like to offer your help on the day, it's not too late! Please speak to Mrs Newell if you have an hour or two to spare.



The tea towels have been a huge success, and we still have plenty available for sale! Keep an eye out for them being sold after school and at the school fair.

Thank you all for your continued support throughout the year. Wishing you all a Merry Christmas and a Happy New Year!

Mental Health Information

Here at Asfordby Hill we champion the belief that to thrive, emotional well-being is just as important as physical health. We advocate that helping children to manage their emotions is as important as teaching them to read and write. We work with children, their families and other outside agencies by helping to support emotional wellbeing issues, so that they're able to fully engage with all aspects of their life. If you require further support with regards anxiety, sleep, managing emotions, toileting, emotional based school avoidance or grief, please see our excellent pamphlets from Dragonfly Impact Education in the school's foyer. In the newsletter each month, we will focus on a theme with additional signposting. This month is **empathy and understanding others**.

These fun, movement-based mood booster activities are linked to relationships and how pupils can recognise emotions in others through empathy. Feeling connected to the people and places around us is an important part of what it means to be human. Making and strengthening connections with others offers stability and safety in our lives and can help us deal with change and to recognise when change is necessary, temporary or more permanent.

[PSHE KS1 / KS2: Connect – videos to strengthen relationships in the classroom and beyond](#)



**Emotion Regulation:
Developing skills in
children**

WITH ELLIE & JESS FROM FAMILY HELP

 Friday 6th December 2024 12:00-13:00pm

Join us in this drop-in webinar to develop skills in supporting emotional regulation in children. Learn strategies and techniques in co-regulation to help manage children's big emotions and feelings.

Join the webinar on Microsoft Teams via login details

Meeting ID: 389 485 552 060
Passcode: DFUBmu

(Please make sure to log on no more than 10 minutes before to avoid technical issues)

Family Hubs
Leicestershire

Here is a really useful article and link to the Asfordby Food Hub: [New Food Hub launches in Asfordby – Melton Borough Council](#)

DON'T MISS OUR BEAUTIFUL CHURCH
FULL OF CHRISTMAS TREES!

MELTON CHRISTMAS TREE FESTIVAL

6th - 10th DECEMBER 2024

IN ST MARY'S CHURCH, MELTON MOWBRAY

Entrance fee £3.00.
Accompanied children FREE.

Friday, 6th December:
10am - 9pm Church Open for viewing
Last entry 8pm.

Saturday, 7th December:
10am - 4pm Church open for viewing
Last entry 3pm.
5pm Family Carol Service amongst the Christmas Trees. All welcome to attend.

Sunday, 8th December:
10am - 5pm Church open for viewing
Last entry 4pm.
6.30pm Songs of Praise with Hathern Brass Band amongst the Christmas Trees. All welcome to attend.

Monday, 9th December:
10am - 8pm Church open for viewing
Last entry 7pm.

Tuesday, 10th December:
10am - 4pm Church open for viewing
Last entry 3pm.
Festival closes at 4pm



For more details contact:
Email - meltonchristmastrees@gmail.com
Tel - 07950 342246

Family Hubs 

Leicestershire

What's on?	When?	What time?	Where?	Contact Info
SEND Friends Parents Drop in	2 nd Monday of the month (Term time)	10-11:30am	Venture House Family Hub	chloe.swann@leics.gov.uk
ADHD Solutions Drop in	4 th Monday of the month (Term time)	10am-12pm	Venture House Family Hub	info@adhdnsolutions.org 0116 261 0711
Busy Bees Stay and Play 0-5 Years	Every Monday (Term time)	1pm-2:30pm	The Edge Family Hub	meltonfamilyhubs@leics.gov.uk 0116 30501060
Jelly Totz Stay and Play	Every Tuesday (Term time)	10am-11:30am	Venture House Family Hub	meltonfamilyhubs@leics.gov.uk 0116 30501060
Parents Well-Being Café	Every Wednesday (Term time)	9-15am-11:30am	Venture House Family Hub	meltonfamilyhubs@leics.gov.uk 0116 30501060
The Bridge Housing Advice Drop-in	Every other Wednesday	9:30am-1pm	Venture House Family Hub	08000 385964 or 07717470824
Mini Mayhem Stay and Play	Every Thursday (Term time)	10am-11:30am	Venture House Family Hub	0116 30501060 meltonfamilyhubs@leics.gov.uk

familyhubsleicestershire.org.uk



Melton Mowbrays
Community Christmas Project .

Toys for All

We are still collecting donation's of new or good condition pre-loved Toys for our Christmas Toy appeal .

Toys will be given to local families that need a helping hand this Christmas at a Gifting Day in December.


So if your sorting out your childrens toys, please think of 'Toys for All'

please message Lisa Godber or text 07901930012 for drop off address

Or, there are donation stations at The Original Factory Shop and The Genny B Public House to drop items off

**ASFORDBY PARISH CHRISTMAS
LIGHT SWITCH ON**

Saturday 30th November at 7.00pm
Riverside Memorial Gardens



**Come and join us in Carol Singing
to start the Christmas Celebrations**



UK Government

Help for Households

HOUSEHOLD SUPPORT FUND

◆ The HOUSEHOLD SUPPORT FUND is now open ◆ The Fund is provided by the Government to local authorities to support families with children and individuals most in need. If you are in need of urgent support you can request help from Melton Borough Council by completing the Cost of living support form online. If you have friends, neighbours or relatives who you think might benefit from this Fund - tell them that help is available! The Cost of living support form can help with:

- Foodbank referrals
- Support with benefits
- Signposting to available support services

Apply here:

<https://forms.melton.gov.uk/HOUSEHOLDSUPPORTFUND/launch>

